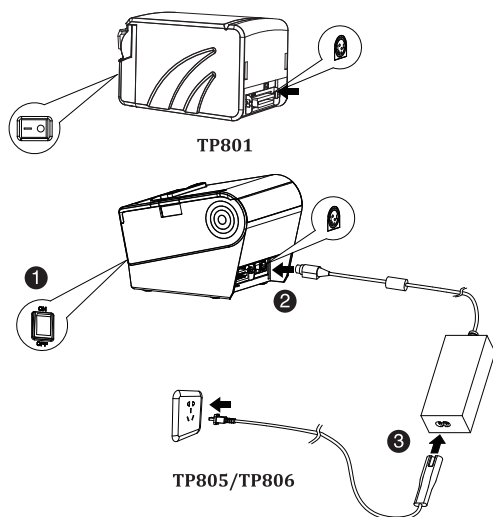
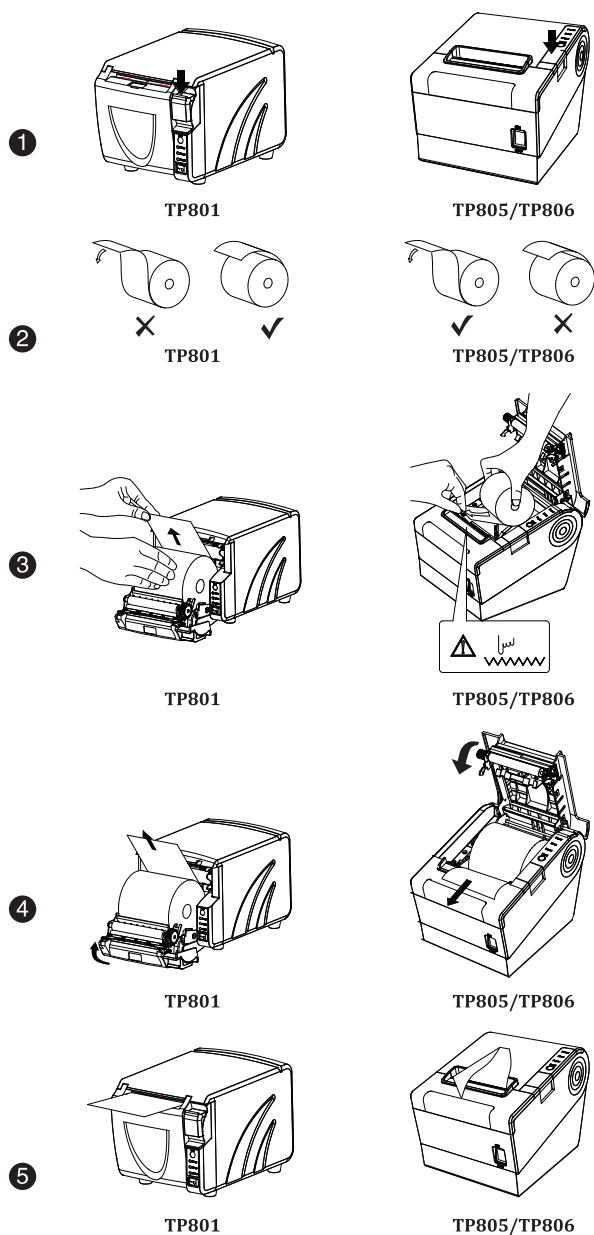


TP801/TP805/TP806 Quick Start Guide

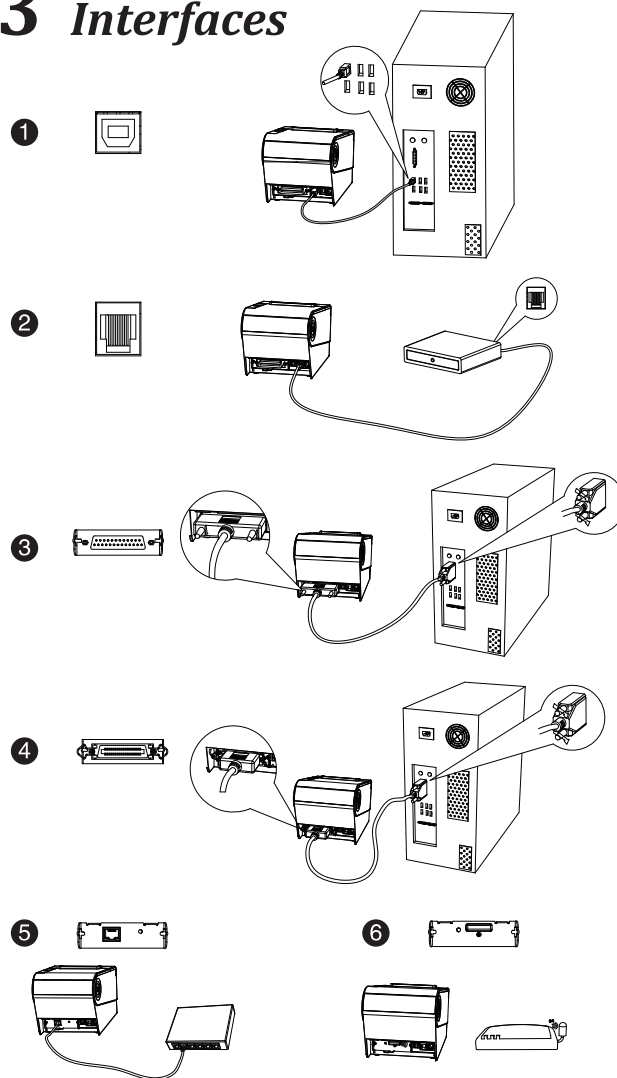
1 Power Supply



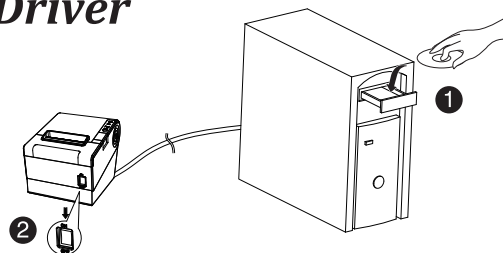
2 Paper Loading



3 Interfaces

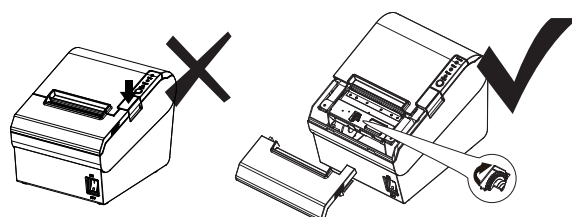


4 Driver

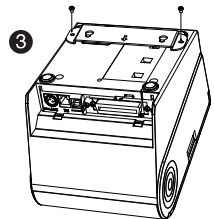
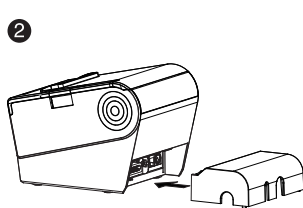
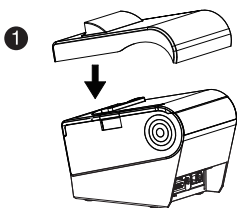


5 Caution

When paper gets jammed, please turn the knob until the cutter blade returns to the normal position.



6 Optional Accessories(TP805/TP806)



7 DIP Switches Setting

1.Serial Interface(RS-232C)

DIP Switch 1

SW	Function	ON	OFF	Default
1-1	Auto Line Feed	Enable	Disable	OFF
1-2	Handshaking	XON/XOFF	DTR/DSR	OFF
1-3	Data Length	7bits	8bits	OFF
1-4	Parity Check	Yes	No	OFF
1-5	Parity Selection	EVEN	ODD	OFF
1-6	Baud Rate Selection(bps)	Refer to table 7-1		OFF
1-7				ON
1-8				OFF

DIP Switch 2

SW	Function	ON	OFF	Default
2-1	Chinese/English Mode	English	Chinese	ON
2-2	Internal Beeper Control	Disable	Enable	OFF
2-3	Auto Cutter	Disable	Enable	OFF
2-4	Busy Condition	Receive Buffer Full	*Offline *Receive Buffer Full	OFF
2-5	Print Density	Refer to table 7-2		OFF
2-6				OFF
2-7				OFF
2-8	Printing Dots Quantity	512	576	OFF

2.Parallel and USB 2.0 Interface

DIP Switch 1

SW	Function	ON	OFF	Default
1-1	Auto Line Feed	Enable	Disable	OFF
1-2~1-8	Reserved	-	-	OFF

DIP Switch 2

SW	Function	ON	OFF	Default
2-1	Chinese/English Mode	English	Chinese	ON
2-2	Internal Beeper Control	Disable	Enable	OFF
2-3	Auto Cutter	Disable	Enable	OFF
2-4	Busy Condition	Receive Buffer Full	*Offline *Receive Buffer Full	OFF
2-5	Print Density	Refer to table 7-2		OFF
2-6				OFF
2-7				OFF
2-8	Printing Dots Quantity	512	576	OFF

Table 7-1 Baud Rate Selection

Transmission Speed	1-6	1-7	1-8	Default
2400	ON	OFF	OFF	9600
4800	ON	OFF	ON	
9600	OFF	ON	OFF	
19200	OFF	OFF	OFF	
38400	OFF	ON	ON	
57600	OFF	OFF	ON	
115200	ON	ON	ON	

Table 7-2 Print Density Selection

2-5	2-6	2-7	Print Density	Default
ON	ON	Reserved	1(Light)	2
OFF	OFF	Reserved	2	
ON	OFF	Reserved	3	
OFF	ON	Reserved	4(Dark)	

Auto Cutter Enable/Disable Selection

DIP Switch Set 2		
SW 2-3	ON	Auto Cutter Disable
	OFF	Auto Cutter Enable
Application	Ignore auto cutter error for continuous printing	

8 Communication Parameters and Default Language Setting

- 1) Please refer to table 6-1 for Baud Rate Selection.
- 2) For ethernet interface card TCP/IP setting,please power on printer then connect to PC LAN port.Input http://192.168.0.31 in PC browser and set (Default IP setting:192.168.0.31).Press and hold on the button in the circle of interface card,then power on again to go back to the default setting.
- 3) The default language is English.Please select DIP switch 2 to choose the multi-languages.

9 Packing List



- Note:
- 1) The power adapter and power cord vary by local or region.
 - 2) The packing materials are actually dependent on the order.

Xiamen Hanin Electronic Technology Co.,Ltd

ADD: Room 305A,Angye Building,Pioneering Park,
Torch High-tech Zone,Xiamen,China.

TEL: +86-(0)592-5885993

FAX: +86-(0)592-5885992

WEB: www.hpirt.com

Note: Before power-on, please carefully read user manual (in the CD) and quick start guide.